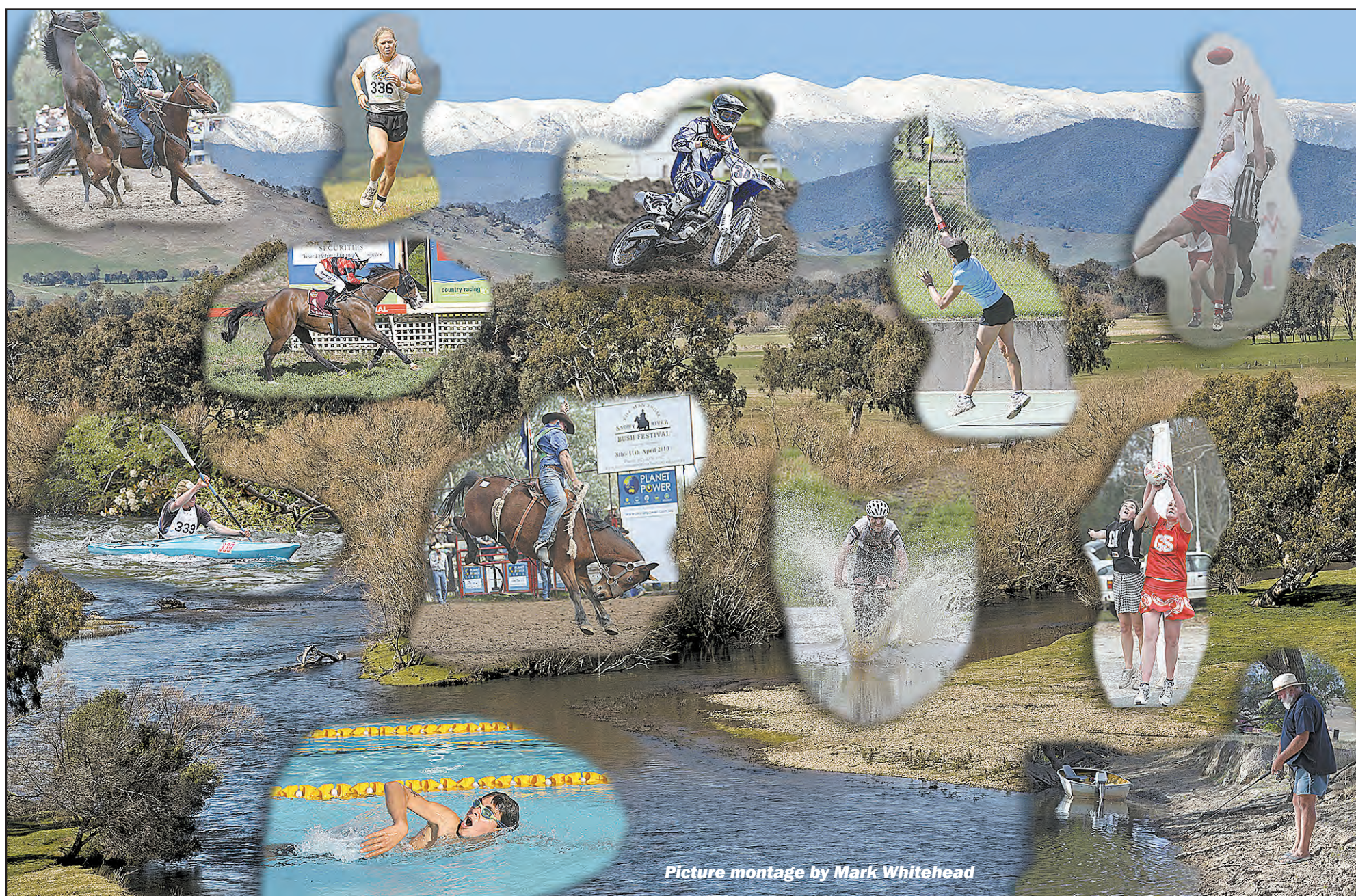


FREE
Please take a copy

UPPER MURRAY HOLIDAY GUIDE 2026

**Head to the High Country for
fun, festivals and adventure**

Head for the hills



Picture montage by Mark Whitehead

Here in the Upper Murray, where Australia's greatest river is born, you'll find a unique adventure playground, just waiting to be discovered.

Historic bridges, lookouts and waterfalls, the crystal clear mighty Murray River and mountain streams - an angler's paradise - the Snowy Hydro Scheme, The Man From Snowy River Bush Festival, Kosciuszko National Park, the best local museum.... you'll have to make time to fit it all in!

The area remains virtually the same as when Banjo Paterson visited

Jack Riley in 1890 and was moved to immortalise it in his famous poem "The Man From Snowy River".

Today, by taking to the mountains on horseback you can answer the same call to adventure that led Jack to live out his days here.

Another way to escape to the pristine wilderness and unique bushland that make up the Upper Murray is on foot.

The region is home to several National Parks and State Forests, where you can spend an afternoon on a peaceful stroll along any of the walking trails or take on something a little more

challenging like climbing to the summit of Mount Kosciuszko (Australia's highest mountain) or Burrowa Pine Mountain. (Australia's largest monolith, 1½ times the size of Uluru).

Almost any trail, park or forest that can be seen on foot can also be explored on mountain bike. Enjoy a leisurely ride through the forest or a challenging gravel bike adventure.

Bicycles, including E-bikes are available for hire at Hobie's Sports Store in Corryong.

There are so many ways to enjoy the pristine

waters of the Upper Murray region.

The region is an angler's dream with the clear waters of the Murray river and its tributaries being home to a variety of fish.

Public boat ramps are available at Tintaldra and Khancoban.

Whatever your preference you will find an abundance of native plants and animals and spectacular scenery beyond compare.

If setting off without a guide please check weather conditions and local knowledge on exploring the region at

the Corryong Visitor Information Centre or with either Parks Victoria or the NSW National Parks and Wildlife Service Information Centre at Khancoban.

A popular attraction in Corryong is The Man From Snowy River Museum.

The extensive and unique displays are loved by thousands of domestic and international visitors each year who visit the museum.

It is rated by overseas tourists as one of the top ten 'must see' museums in the country - a remarkable accolade for a small town..

A big welcome

The Towong Shire welcomes visitors to the municipality and to the Upper Murray.

We have two main towns, Tallangatta and Corryong and a number of small towns.

We pride ourselves on our clean, green environment.

Corryong holds its famous 'Man from Snowy River Bush Festival' each April, celebrating the legendary ride which was the subject of Banjo Paterson's famous poem.

We also invite you to check out our latest touring route - the Great River Road.

Whether you come here to enjoy the festivals or the magnificent scenery, local people will welcome you warmly.

*Towong Mayor,
Cr Peter Tolsher*

Secret waterfall revealed after fire devastation

A hidden waterfall nestled in the heart of the Upper Murray that emerged from the ashes following the 2019/20 Black Summer Bushfires.

The region was devastated by the bushfires and the pandemic lockdowns caused significant delays to the recovery process but one of the gems brought to light is Thowgla Falls, which is located on Marginal Road in the Thowgla Valley.

The falls are now more accessible to visitors following the construction of a new walking trail and viewing platform.

The works, which were completed by Forest Fire Management Victoria (FFMVic) crews and local contractors, also includes a day visitor area and toilets.

"The bushfires had a significant impact on the community and the environment," said FFMVic, Upper Murray District Manager, Dave Jensen.

"Creating opportunities for visitors to come back to the Upper Murray is an important part of the community's recovery. Thowgla Falls is spectacular and we're thrilled that we're able to provide more

opportunities for people to reconnect with nature.

"The fires helped expose this natural site which was previously inaccessible due to dense forest surrounding the waterfall.

"The new walking track leads visitors through stunning native bushland to a viewing platform offering unparalleled views of the cascading waterfall.

"In addition to Thowgla Falls, several other sites including Walkers Lookout and historic huts such as Wheelers Creek Hut, Gibsons-Pinnibar Hut and Ski Hut have also

been rebuilt following the fires," Mr Jensen added.

"It's hoped all the bushfire recovery projects will boost tourism and support the regional economy with visitors now able to experience the natural beauty of the area once again."

The project was funded through the Victorian government's \$110 million Bushfire Recovery Program to assist with building efforts and Victoria's Great Outdoors, a \$106.6 million investment in better walking trails, campgrounds, four-wheel drive tracks and facilities.



Thowgla Falls are one of the newest attractions in the Upper Murray for nature lovers.

So much to see and do!



The magnificent view from Farran's Lookout between Corryong and Tintaldra.

Corryong is undoubtedly the jewelled centre piece of the magnificent region known as the Upper Murray. Located just 11kms from the Murray River and in the foothills of the Australian Alps, Corryong and district has something for everyone.

Make the most of your visit to the magnificent Upper Murray by calling into the Corryong Visitor Information Centre to discover more of the attractions this region has to offer.

Ask about the abundance of local natural attractions including Burrowa-Pine Mountain National Park. This awesome granite monolith is 1.5 times larger than Uluru and has breathtaking views from its summit should you chose to walk.

The recently restored Cudgewa Bluff Falls is also within the park and is one of the area's best kept secrets. Following the 2019-20 bushfires the campgrounds, walking tracks, viewing platforms, steps, signs and toilet blocks

have all been replaced and improved disabled access has been installed.

Take a drive to Embery's Lookout on top of Mt Mittamatite and take in the view of Corryong with the Australian Alps as your backdrop. Mt Lawson State Park is only a short drive away. Visit Avondale Gardens at Shelley and while in the area explore the trestle bridges.

For those with an interest in discovering more intimately our natural beauty there is four wheel driving, fishing and canoeing.

Touring throughout the Upper Murray provides unlimited opportunities to explore its local townships and history.

Visit historic Tintaldra, Walwa and Jingellic along the river. Stop for the many photographic opportunities at lookouts along the way. Tour Cudgewa, Nariel and Thowgla and the picturesque Biggara valley. Pack a picnic and find a pleasant location along our many waterways.

A visit to the Man from Snowy River Museum in Corryong should definitely be included on your itinerary. The Museum features the history of Jack Riley of "Man from Snowy River" fame.

Jack was the head stockman at Tom Groggin Station when he was visited by AB "Banjo" Paterson who penned the now famous poem "The Man from Snowy River" (1890). Jack Riley is buried in the Corryong Cemetery.

The museum also houses a unique collection of ski memorabilia and other local history.

A visit to the sites of the Snowy Scheme is a must for those wanting to experience the best of our region this summer. Visitors can pay a visit to the Snowy Hydro visitor centres and learn more about the power generator's operations, the Snowy 2.0 project and the history of the iconic Scheme.

No matter what time of year you visit, there is bound to be an exciting event waiting for your presence.

Annual feature events include the Nariel Creek Folk Festival, the Towong Cup races and the Corryong Show & Machinery Club Rally.

The Nariel Creek Folk Festival is held over the Christmas/New Year holidays across two venues.

From a small gathering of like-minded people and curious locals, the folk festival has become the oldest running event of its kind in Australia, continuing a long tradition of old time music and dance which has been a feature of the Nariel Valley for more than 100 years.

The Towong Cup race meeting is well known as the 'Flemington of the Bush'. It is held on the March long weekend.

The Man From Snowy River Bush Festival is held in Corryong in April - a unique Australian bush gathering showcased by The Challenge.

The Corryong Visitor Information Centre is open daily between 9am and 5pm (excluding Christmas Day and Good Friday).

BAR & POKIES ROOM

**The Club
Corryong**

PUBLIC TENNIS COURTS

24/7 VENDING MACHINE
Refreshments & Golf Accessories

PH: 02 6076 1081
Strzelecki Way, Corryong

9 Hole Golf Course
SYNTHETIC GRASS GREENS
PLAY ALL DAY FOR \$22.50!
Cart & Club Hire Available



'988' CHINESE RESTAURANT
OPEN TUESDAY TO SUNDAY FOR LUNCH & DINNER
PH: 0434 528 272

The ideal getaway

Corryong



COSTELLO RURAL TOWONG CUP SATURDAY MARCH 7, 2026

• 7 Event Card •
Prizemoney
\$175,000

• Gates Open 11am
• Courtesy Buses Available
• Marquee Packages Available



• Kids attractions • Fashions on the Field
• Food providers • Full bar facilities
• TAB & bookmakers ring

country.racing.com.au/towong



Costello Rural
REAL ESTATE | LIVESTOCK | MERCHANDISE



country racing
It's a Great Day Out®

Located in the Upper Murray are a number of spectacular parks and reserves.

These natural attractions contain rugged mountain peaks, rocky outcrops and waterfalls and offer spectacular views over the surrounding countryside.

The varied terrain is home to numerous rare species of flora and fauna and provides for a range of recreational activity.

Burrowa - Pine Mountain National Park - This Park (18,400 ha) consists of two rugged and contrasting mountains. The park boasts impressive scenery, diverse habitats and significant flora conservation values.

Bluff Falls - a spectacular set of waterfalls where water cascades off the park plateau, over Cudgewa Bluff and into a tranquil grotto below. New viewing facilities.

Pine Mountain - this gigantic rock monolith is 1.5 times as big as Uluru (Ayers Rock). The walk to the top over imposing rock outcrops (12 kms return) is difficult but good views are available after only 1 km.

The Lookouts Walking Track - this walk starts at Bluff Falls and climbs the past Campbell's Lookout (1.5kms return) to Ross Lookout (6km return). It offers excellent views of the park and surrounding countryside.

Mt Burrowa - the highest point in the park (1300m) can usually be reached via a number of walking tracks including from Hinces Creek (21 kms return) and from the Cudgewa Bluff Rd (15 kms return). The walk is strenuous but rewarding. It would pay to check whether it is open.

Bushwalking - a range of additional walking opportunities are possible and a combination of walking tracks and 4WD tracks may be used to form extended overnight hikes.

Picnicking and camping - basic facilities are provided at Bluff Creek, Blue Gum Camp, Hinces Creek and at Pine Mountain.

Four wheel drive and mountain biking - a network of 4WD tracks exists although most minor tracks are fine weather only and seasonal closures apply.

Mt Lawson State

Park - This Park (13,150 ha) is known for its steep slopes, cliffs and prominent rocky bluffs.

The park contains a range of largely undisturbed natural environments with significant conservation values and walking tracks

Mt Lawson Summit - the highest point (1,041m) in the park provides outstanding views north over the Murray River valley and south to the Victorian Alps.

Historic Railway Trestle Bridge - this high, timber bridge over Boggy Creek was built c1915 as part of the disused Wodonga - Cudgewa railway line.

Picnicking and camping - basic facilities are located at the Historic Railway Trestle Bridge, Koetong Creek, Mt Lawson summit and the Kurrajongs.

Four wheel driving and mountain biking - a network of vehicle tracks exists although most minor tracks are fine weather only and seasonal closures apply.

Mt Granya State Park - This Park (6,140 ha) is a dominant feature in the landscape with its steep, forested slopes rising dramatically above Lake Hume and surrounding valleys. The park features diverse vegetation and spectacular wild-flower displays.

Mt Granya Summit - the highest point in the park (870m) provides spectacular views of the surrounding countryside.

Granya Falls - these seasonal waterfalls, a pleasant destination for day-visitors, are reached after a short walk (1 km return) from Cottontree Creek.

Scout Hut - a log hut, constructed by the Granya Scout Group in 1937, is situated on the walking track between Cottontree Creek and Granya Falls.

Bushwalking - a variety of walking opportunities are possible on the network of tracks and fire trails.

Four wheel driving and mountain biking - a network of vehicle tracks exists although most minor tracks are fine weather only.

Jarvis Creek Regional Park - This Park (2,510 ha) consists of two prominent, forested ridges that form a broad plateau at their junction. The park contains a diverse range

of wildlife and is readily accessible from nearby towns.

Plateau Road Scenic Drive - this two-wheel drive, fine weather, gravel road offers a pleasant drive through the park between Jarvis Creek and Georges Creek Roads.

Picnicking - basic facilities are located at picnic areas on Plateau Road and at Lightning Creek.

Four wheel driving, mountain biking and horse riding - a network of vehicle tracks exists although most minor tracks are fine weather only.

Mt Mittamatite Regional Park - This Park (4,280) is a striking feature in the landscape, its forested slopes rising sharply from the surrounding plains. These steep, rocky slopes shelter a number of rare plant species.

Mt Mittamatite Summit - Located on the highest point in the park (1,003m) are radio and aviation communication facilities and a firetower. Note: The summit is only accessible during dry conditions.

Embry Lookout & Reg's Lodge - Provides spectacular views of the Kosciuszko Main Range (NSW) in winter and is a popular hangliding location.

Wabba Wilderness Park & Falcon Point - Wabba Wilderness Park (20,100ha) is important for its high nature conservation values, relatively undisturbed foothills forests and natural water catchment.

The park provides visitors with opportunities to enjoy some solitude. No public vehicles or animals are permitted. No facilities or signs exist.

Murray River Reserves - Located along the Murray River are a number of reserves that provide opportunities for camping, swimming, fishing, canoeing and other passive pursuits.

Avondale Gardens - The Avondale Gardens Reserve (22ha) near Shelley is centred on the original homestead site of a former grazing property. The reserve contains an impressive 2ha garden of mainly exotic tree species, first established in the 1950s. Basic picnic facilities are provided. Camping is available in designated areas.

Visit our largest park

Visit Kosciuszko National Park at any time of the year and a world of discovery awaits you.

Autumn is perfect for getting an adrenaline charge before winter on your mountain bike. Boating and fishing activities are also great before the water gets cold again for winter.

Spring is a great time for bushwalking as the wildflowers come into bloom in some areas and the days are not too hot.

In summer there's alpine wildflowers in bloom and a wealth of special student excursions to join including climbing Mt Kosciuszko, bush banquets, learning about conservation and Aboriginal heritage.

In winter stay at the ski resorts at Perisher, Thredbo and Charlotte Pass for skiing and snowboarding adventures in the beauty of the snow-covered mountains.

The Park covers 690,000 hectares (1.5 million acres).

From the summit of Mt Kosciuszko, at 2228 metres, the park drops down through woodlands to plains and river valleys of a few hundred metres altitude.

With such diverse areas, the park supports a potpourri of plant and animal life, including many alpine plants which are found nowhere else in



Blue Waterholes is a tranquil base for exploring the park.

the world.

The park is also home to rare animals including the mountain pygmy possum, the broad-toothed rat, tiger quolls and the unique vivid yellow and black striped corroboree frog.

You might also see the unusual wingless Kosciuszko grasshopper, known for its ability to change from blue to green, depending on the temperature.

More than 200 species of birds have been sighted in the park - almost 40 per cent of the known bird species in NSW.

The magnificent wedged-tailed eagle is a common sight as are kestrels, emus, cockatoos and magpies. You might even see a lyre bird in the western end of Kosciuszko.

Kosciuszko is a place to go to escape urban

pressures and discover scenic ranges, plains and fragile alpine areas.

The park has several short, regularly maintained walking tracks where visitors can begin their discovery of Kosciuszko.

Alternatively, escape to the more remote areas of the park following one of the many management trails.

Take in the views at one of the numerous lookouts scattered throughout the park.

Try caving. Guided and self-guided tours are available at Yarrangobilly Caves in the northern end of the park. In addition to its majestic limestone caves, the area boasts a thermal pool where, with water temperatures at 27 degrees Celsius, people swim all year round.

Go canoeing. The Park's fast mountain streams challenge many

canoeists. Many of these rivers are part of the hydro-electric scheme, so check if the river is downstream from a dam and for possible dangerous releases from its spillway.

Relax and unwind. The Lower Snowy in the southern end of the park is a great place for the family on a hot summer's day. Picnic by the river's edge and cool off in the water.

Saddle up a horse. Re-live the days of the "Man From Snowy River" and explore the park on horseback. Horse riding is only permitted in approved areas in order to prevent damage to vegetation and soil stability.

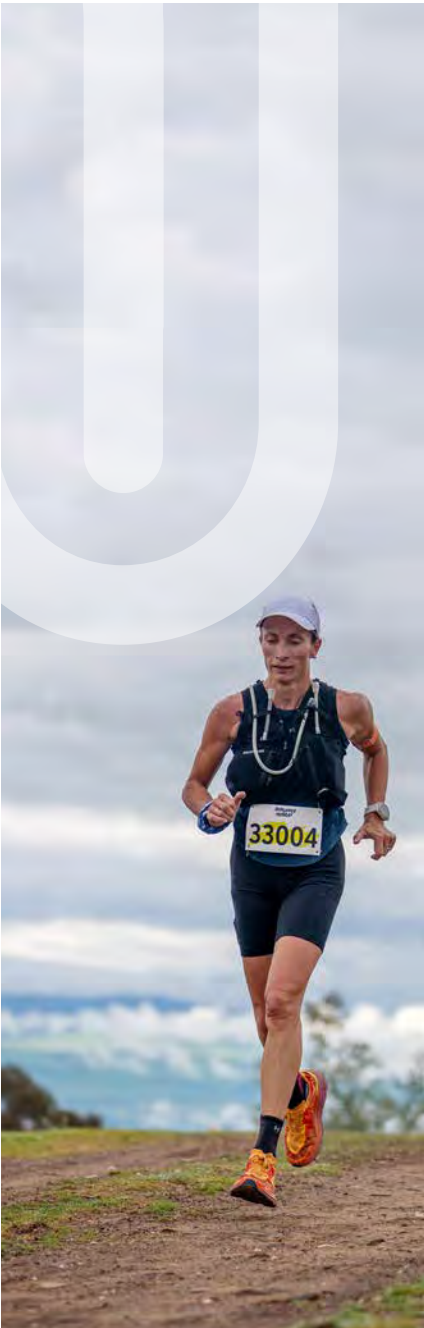
For heritage buffs, scattered throughout the park are huts and the remnants of times past. Start your exploration at Kiandra's heritage trail off the Snowy Mountains Highway.



We stock the greatest range of tyres and batteries from budget to brand names. Provide us with a written quote and we will beat the price of any tyre of the same brand and size by 10%. See our friendly staff for a great deal!



27 Donaldson Street, Corryong
Ph: (02) 6076 1177
E: corryongtyre@hotmail.com



Corryong Visitor Information Centre

50 Hanson Street,
Corryong, VIC, 3707
Phone: 02 6076 2277

visituppermurray.com.au



Club scores with new greens Follow the Great River Road ...



Corryong hosts several tournaments throughout the year.

Following the horrific Black Summer bushfires of 2019-20 the people of the Upper Murray did what they do best - they got on with the job!

From the devastation has come two new first rate recreational facilities that will make a stay in Corryong even more enjoyable.

Thanks to bushfire recovery funding from national and state governments the Corryong golf course now boasts state-of-the-art synthetic

greens and the Playles Hill Park development offers magnificent views, bike trails, improved carparking, walking tracks, informative signage and an upgrade of visitor facilities including shade structures, barbecue area, park furniture and new amenities block.

Golfers will be excited about the way the new greens play and green fees are just \$22.50 for the entire day - just tap and go and play!

Cart and club hire is

also available online at <https://vendigolf.com.au/hire/>

After play enjoy a drink and a meal on the new deck overlooking the 9th green.

The golf club is situated at the Corryong Recreation Reserve which also contains synthetic public tennis courts and is next to the Corryong Bowls Club which also has synthetic rinks. So no matter if it rains, you can get back to your activity in no time!

The Playles Hill Project Group has been working since the Black Summer fires to reinvigorate Playles Hill Park and after five years ad more than 30 working bees a lot has been achieved. Much of the invasive, weedy vegetation has been removed and already a number of plantings of both native shrubs and exotic and native trees have occurred.



Twin towns treat

Proximity to the Murray River makes the twin border towns of Walwa and Jingellic popular among those who enjoying a variety of water sports.

With a store, hotel and craft shops, bush nursing centre and primary school, Walwa, on the Victorian side of the river, is a small but active community.

The area offers a multitude of activities ranging from canoeing, white-water rafting, bushwalking, horseriding, cycling, fishing and 4-wheel driving. It is also famous as the birth place of the Murray Grey cattle

breed.

The picturesque but tricky nine-hole Walwa public golf course is a pleasant way to while away a couple of hours.

Just 800m from the township you will find the Walwa Riverside Caravan Park.

Situated on the banks of the river, nestled amongst shady cottonwood trees and well-maintained gardens it is the ideal spot for fishing, kayaking, swimming, cycling and bushwalking.

It's an ideal getaway for holiday makers, caravan clubs and boating and fishing groups.



Local fauna features in a series of public artworks as part of a local touring route in the region - The Great River Road - which starts at Bellbridge on the Hume Dam and wends it way along the mighty Murray River to Khancoban.

Its many wayside stops feature picturesque views of the Murray River, the Upper Murray valley, the surrounding areas and the Snowy Mountains.

The route includes an upgrade of existing wayside stops with new interpretive signage, seating, shelters and landscaping as well as the installation of seven large-scale, interactive artwork pieces at key sites along the way.

Award winning sculptor Benjamin Gilbert from the Yackandandah-based Agency of Sculpture was commissioned for the works.

The first of these at Tintaldra was a homage to the famous Murray Cod and the other works reference the natural fauna throughout the area - a flying eagle at Mount Alfred, Bogong Moth at Newmans Lookout, Murray Cod at Tintaldra, Murray Cray at Bringenbrong, the Big Trout at Khancoban, a Lace Monitor at Pine Mountain and the latest piece, Dancing Brolgas at Towong.

The route along the Murray River Road and Murray Valley Highway offers the best touring experience of Australia's greatest River, with the spectacular Snowy Mountains as the backdrop.

The Great River Road



The Dancing Brolgas are the latest addition to the series.

experience is designed to be taken as a leisurely trip travelling principally along the Murray River road from Bellbridge, just outside Albury, in the west to Khancoban in the east or vice versa.

Travellers experience many stops, views and stories and towns along the way.

The Murray Grey cattle had its origin in the Upper Murray and the story is told at a wayside stop at Thologolong where you can read how and see where it all began.

The Murray Cray at

Bringenbrong marks the spot where local man Graham Middleton began his epic swim of the length of the Murray River in the 1990s to become the first person to conquer Australia's greatest waterway.

While touring the Upper Murray experience the local towns and hospitality. Have a coffee or enjoy a tranquil country pub meal watching the river waters flow by.

See The Man From Snowy River statue and the museum in Corryong - rated among the top 10 in

Australia.

There are many things to do in the Upper Murray and its surrounds so call in at the Corryong Visitor Information Centre for more information.

Complementing the Great River Road has been the construction of a new boat ramp at the Tintaldra Reserve.

A concrete ramp has been built approximately 40m downstream of the Tintaldra Bridge.

A trailer and parking space is situated above the riverbank on Back Tintaldra Road.

Drop a line in pristine waters

The Upper Murray is an angler's dream with the clear waters of the Murray river and its tributaries being home to a variety of fish.

Murray Cod, Trout Cod, Brown Trout, Rainbow Trout, English Perch (Redfin) Macquarie Perch, Golden Perch (Yellowbelly) and crayfish thrive in the waters of the upper river catchment.

This makes fly fishing and angling some of our best loved outdoor sports and forms of relaxation.

To keep our fish populations sustainable, every waterway has a fishing classification which determines its open fishing season, the number of allowed attended rods, lines and hooks and the legal length and daily bag limit allowance for these fish.

Fishing requires an appropriate state fishing license which can be purchased online or in Corryong, Tumbarumba, Tallangatta, Khancoban, Dartmouth, Mitta Mitta and Walwa. Fishing from either bank of the Murray River requires a NSW fishing license.

Local fishing information and live bait are available at Hobie's Sports Store, Corryong (0417 192 149).

Ramp Access: Lake Hume; Bellbridge; Tintaldra; Khancoban, Tallangatta; Dartmouth.



Get in the loop

Visitors to the Towong Shire are able to take two leisurely drives that wind their way throughout the municipality.

They can explore and experience picturesque landscape on the Great River Road which takes in Corryong, Towong, Khancoban, Tintaldra, Pine Mountain, Walwa, Jingellic, Wymah, Talgarno and Bellbridge.

Features of the drive include:-

- Corryong - Man From Snowy River Country and the resting place of the legendary Jack Riley, Museum.

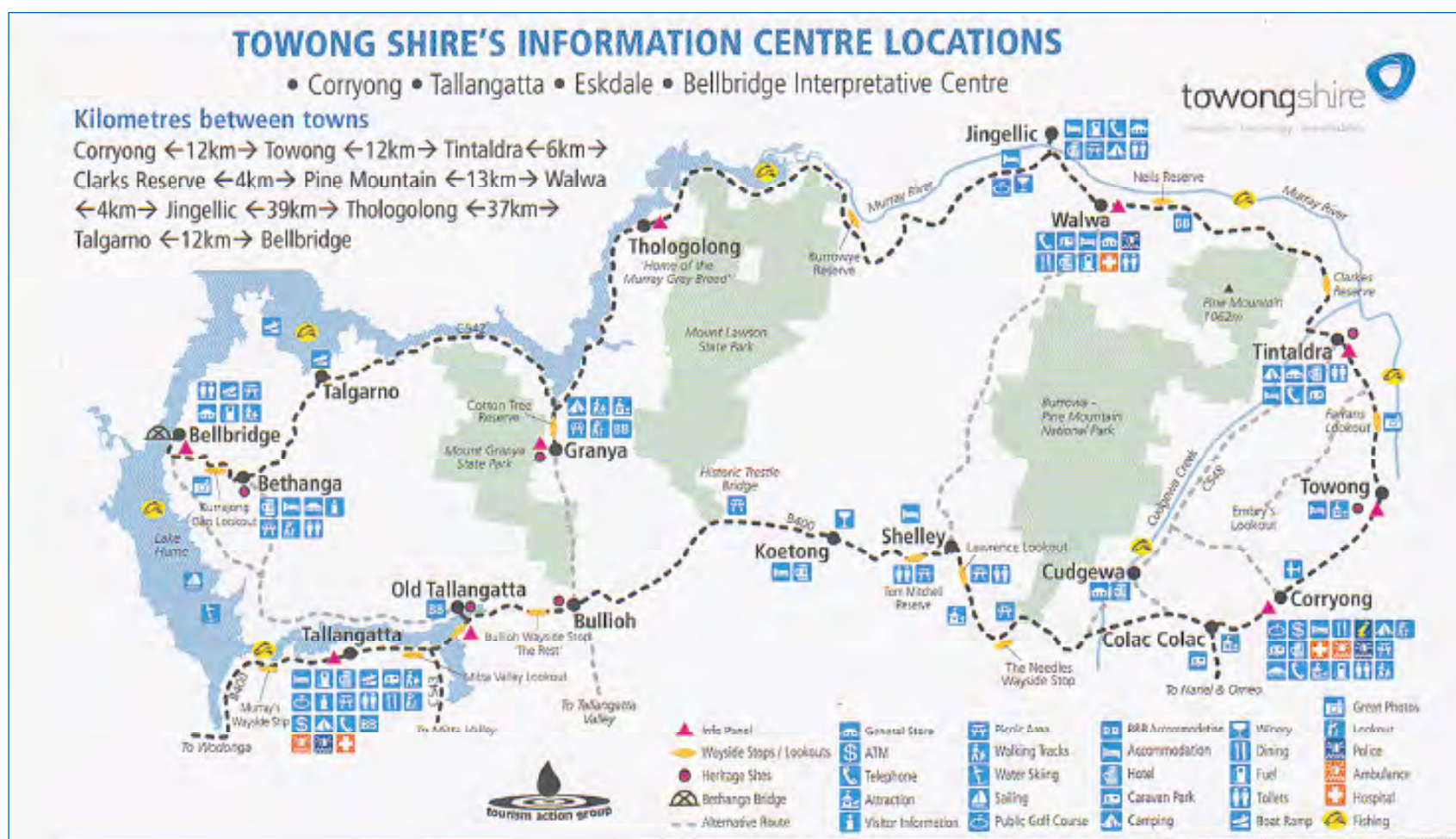
- Towong - Historic racetrack where horses have pounded the turf since 1871. Historic marker of Aboriginal 'Black Mag's' tree.

- Tintaldra - Hotel, boat ramp, panoramic views from Farrans & Embreys Lookouts.

- Clarks Reserve - Wonderful birdlife.

- Pine Mountain - Australia's largest monolith, 1.5 times bigger than Uluru. Enjoy the walk to the summit.

- Walwa - Country hotel, golf course, great fishing and craft shop. Upper Murray Cottages facilities include panorama views and canoe



and bicycle hire.

- Jingellic - Great old country pub on the banks of the Murray.

- Thologolong - Birthplace of the Murray Grey cattle breed.

- Talgarno / Wymah Ferry - Cross to NSW and return to Victoria. 'Toot' your car horn for a ride.

- Bellbridge - Great picnic spots along Lake Hume. Enjoy the water

activities and view the historic Bethanga Bridge.

- A range of quaint B&B, guest house, hotel, caravan park or motel accommodation is available along the Great

River Road.

The Murray Valley Highway Loop takes in Corryong, Cudgewa, Nariel, Berrigama, Shelley, Koetong, Bullioh, Tallangatta Valley and

Tallangatta. This tour can commence from either Tallangatta or Corryong.

- Nariel Creek - Recreational reserve and home of Australia's first folk festival, good fishing,

swimming and picnic area.

- Cudgewa - Bluff Falls and bushwalking tracks,

- Mt Lawson - Historic rail trestle bridge and picnic grounds.



WALWA HOTEL

39 Main Street, Walwa

Ph: 02 6037 1310

E: info@walwahotel.com.au

W: www.walwahotel.com.au

Check out our website or facebook for more information on opening times and events



Open Hours

January Hours Only

Tues 4pm to 8pm

Wed - Sun 12pm to 8pm

Closed Monday



- **Meals**
- **Functions**
- **Birthday Parties**
- **Accommodation**
- **Beer Garden**

Discover the wonders of the mighty Snowy Scheme

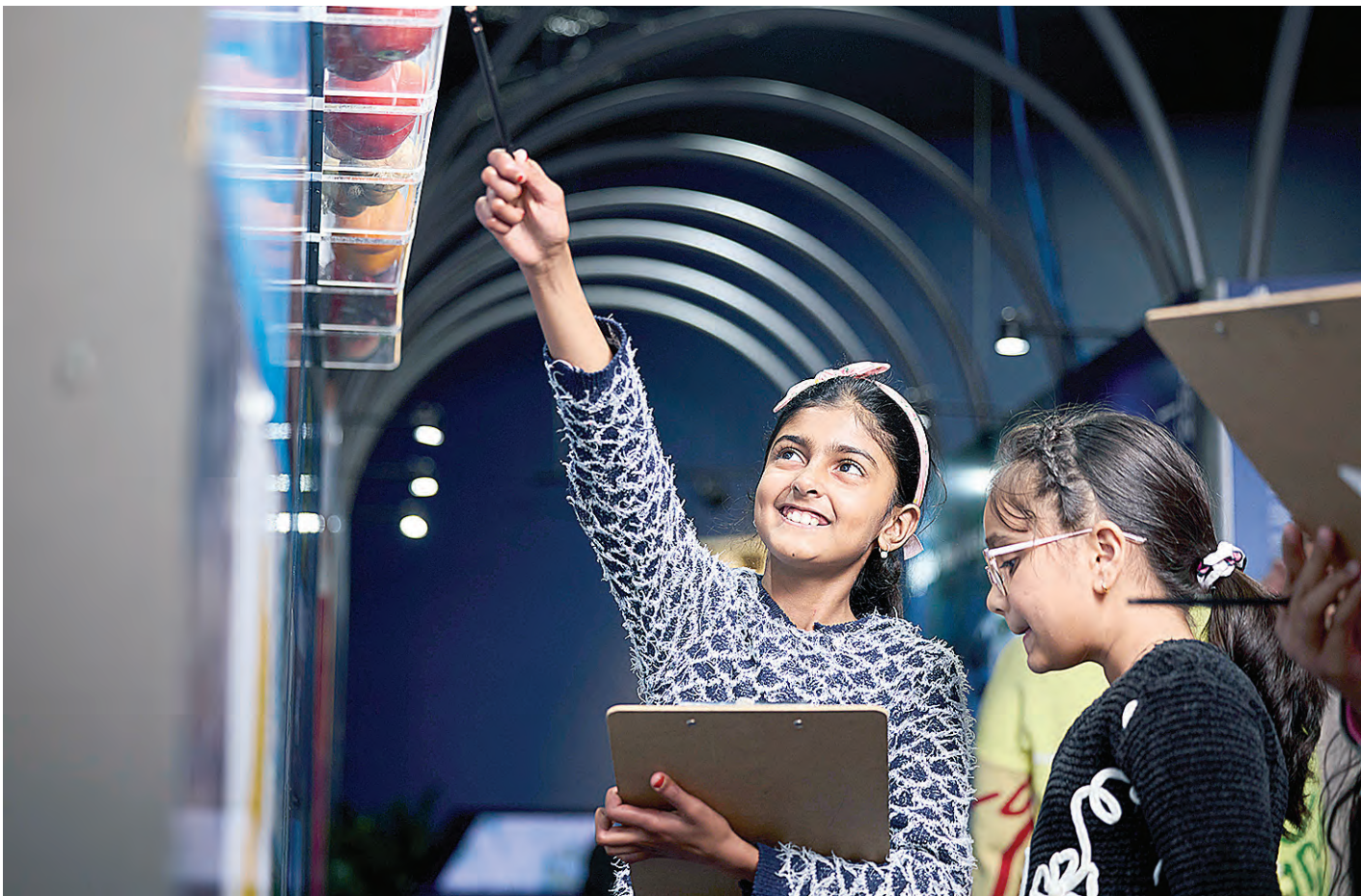
Start your journey in Khancoban with a visit to the Snowy Hydro information display located within Pickled Parrot Providore. Explore the model of the Snowy Scheme, real-time operating screens showcasing Snowy Hydro's current operations, and informative exhibits. While in Khancoban, don't miss the beautiful Khancoban Pondage and stand at the Khancoban Spillway.

As you travel up the mountain, take in the amazing Murray 1 Power Station from the lookout before heading to the Snowy Hydro Discovery Centre in Cooma, a must-visit destination for anyone curious about renewable energy or the Snowy Scheme's history.

At the Discovery Centre, go on the journey from Snow to Switch in the state-of-the-art immersive theatre. Learn how Snowy Hydro transforms water into clean, renewable energy that powers homes across the National Electricity Market.

You'll discover Snowy Hydro's critical role in Australia's energy transition through interactive displays, immersive theatre and a scale model of a tunnel boring machine. Whether you're an engineering enthusiast, a family with curious kids or a history buff, the Snowy Hydro Discovery Centre has something for everyone.

Plan your visit today and discover the energy behind the Snowy Mountains.



Discover how SNOWY HYDRO keeps the lights on

Discover the world of renewables at the Snowy Hydro Discovery Centre through our **'Snow to Switch' immersive experience.**

Learn how Snowy Hydro generates clean, renewable energy and supports Australia's energy transition.

Explore the journey from the Snowy Mountains to powering your home with the flick of a switch.

Perfect for families, kids of all ages and engineering enthusiasts alike, this engaging experience brings the Snowy story to life.

snowyhydro.com.au

[1800 623 776](tel:1800623776)



Snowy Hydro Discovery Centre and Cafe Monaro Highway, Cooma
Open 7 days | Weekdays **8am-4.30pm** Weekends and public holidays* **9am-2pm**

Snowy Hydro Display inside the Pickled Parrot Providore Shop 1, Town Centre, Mitchell Ave, Khancoban
Open 7 days | Tuesday-Friday **8am-5pm** Saturday-Monday **9am-4pm**

*Closed Christmas Day.



PAGE EIGHT

CORRYONG COURIER HOLIDAY GUIDE

2026

The Man From Snowy River Bush Festival

Get your tickets here!

16th - 19th April 2026



ENJOY the STORIES and COLLECTIONS of our PAST...

The Man From Snowy River Museum in Corryong is a must see attraction!

The museum is filled with thousands of treasures relating to the history of the Upper Murray.

- The collection highlights:
- Jim Simpson's POW Rug
 - The Mitchell Ski Collection
 - Jack Riley Memorabilia
 - Plus much more!

The museum is housed in the original 1926 Shire of Upper Murray building, with many outbuildings included from around the district.

- Jarvis Homestead
- Old Lockup
- Policestation
- Schoolhouse
- Blacksmith's Forge
- Shearing Shed
- Tool Shed

Open 7 days a week

Adults: \$5
Child: \$1
Family: \$10
Groups welcome!

Telephone: 02 6076 2600

103 Hanson St
Corryong Vic 3707
Email: museum@3707.net.au
Web: www.manfromsnowyrivermuseum.com.au



Take a two feet tour



Seasons' Greetings
From
Bacash's Emporium

See us for all your holiday clothing & bedding

- Men's, ladies & children's clothing & fashion accessories
- Mattresses & overlays
- Pillows, sheets & blankets
- Bath & beach towels
- Haberdashery, wool & fabrics

HOLIDAY BARGAINS!

Secondhand furniture & collectables

23 Hanson St., Corryong
Ph: 02 6076 1477

Start outside the Memorial Hall at the corner of Hanson Street and Donaldson Street and end up at the 'Man From Snowy River Museum'.

As early as 1861, John Derbyshire (Acting District Surveyor) sent Arthur F Walker to subdivide country lands at Tintaldra, Cudgewa, Colac Colac and Wabba.

In the same year Derbyshire himself laid out the township of Towong, with the first land being offered for sale on 29th November, 1867.

Both Towong and Tintaldra were vying to be the 'capital' of the Upper

Murray.

However, even in the 1860s, the manager of Watson's Tintaldra Store, Mr Charles Armstrong, wrote in his diary that Corryong was the most natural centre and his judgement was proved correct.

Corryong was surveyed in 1879 by Thomas K Brain and the first land sale took place on 20th June, 1882. Some development had taken place when a Mr Miller transferred his store from Koetong by bullock wagon in 1875.

When he died the following year, Donaldson (who was

managing Watson's Store at Tintaldra) bought the estate and expanded the business.

In the meantime, the Primary School had transferred to its present site (diagonally opposite the Memorial Hall) in 1877 from Hugh Harris' "Hunters Plain" where it was established five years earlier.

This new school was built by Mr William Lloyd and it still stands today, surrounded by new additions.

Donaldson decided that his business would be better served if it was nearer the school, so in 1883 he built a new shop opposite the school.

This shop, which later included the Post Office, was burnt down in 1903 and rebuilt where it stands today as Pioneer Corner at the top of Hanson Street.

The current Shire Offices building was opened on 28th May, 1971 by the then Premier of Victoria, the Hon Rupert Hamer. The Shire Engineer of that time, Mr John Sherring, designed

the building.

80 Hanson Street was, for many years, a doctor's residence. The well-loved Dr Greenham (after whom Greenham Street was named) lived here until the residence and surgery diagonally opposite were completed. That building now houses the Baptist Church.

The land on which the Masonic Lodge was built was purchased from Andrew and James Harris and the lodge opened on 15th October, 1921.

The red roofed house at 104 Hanson Street was built in the 1920s as the Shire Engineer's residence. One of the first to occupy it was Mr Farran, whose name is perpetuated in Farran Street and Farran's Lookout on the road to Tintaldra.

The end of your walk down Hanson Street is the 'Man from Snowy River' Museum. This building was erected in 1926 as the Upper Murray Shire Offices and handed over to the Upper Murray Historical Society in 1971.

The museum houses

an interesting collection of local memorabilia, as well nationally and internationally significant items, and is a must-visit stopover – allow at least an hour to see it all.

The museum is open on a daily basis and varies on the time of year - check the Tourist Information Centres for current times.

Most visitors to Corryong comment on the impressive trees lining the main street, especially in autumn when they display their gold colours.

These liquid ambers are planted all around town. A former shire engineer, John Showers, who had come from the Bright area, was responsible for the planting which started at the museum many years ago. To get back to the starting point walk back via Wheeler Street and see more of the trees that have given this town the reputation for its autumn displays.

There are many other historical buildings within the town including Davis Cottage in the Attree Centre.

Shelley shares its secrets

The Shelley area near Koetong has several attractions worth a visit.

Tom Mitchell Reserve is located adjacent to the Murray Valley Highway and offers BBQ facilities, toilets and a safe rest area.

Named for Tom Mitchell, local MP, Treasurer of Victoria and a champion of the softwood industry, it was Tom's vision that led to the establishment of the pine plantation.

The Shelley Forest Camp was established in the 1960s by the Victorian Forest Commission to house workers in the newly established softwood plantations. In 1975 it was converted to short term accommodation.

The Shelley Railway Station site is significant in both local and State railway history as the highest railway station in Victoria. After the line closed in 1981 the site became neglected and overgrown until local volunteers decided to



reclaim this important heritage site and set about restoring it in 2002.

The station is at one end of a 12km walking track between Shelley and the Boggy Creek Trestle Bridge at Koetong.

Lawrence Alpine Lookout offers panoramic views of the Snowy

Mountains. The turnoff is located 2km from the Shelley Forest Camp. A toilet and picnic shelter is provided at the lookout, which is maintained by the local community volunteers.

Pheasant Creek Nature Conservation Reserve is renowned for its fine

examples of sub alpine heathland.

Avondale Garden, 12km south of Shelley, was established in the 1940s as part of Avondale Homestead, on an 11,000 acre property. There are BBQ and picnic facilities set among magnificent exotic trees.

A colourful history

Set among majestic liquid amber trees in Hanson Street in Corryong is the 'Man from Snowy River' Museum.

The commitment of the local community to carry on the traditions and stories of early settlement through to the post-war years is an experience to behold.

The extensive and unique display is loved by thousands of visitors each year who visit the museum.

It is rated by overseas tourists as one of top ten 'must see' museums in the country.

People from around the world also visit the museum to retrace their heritage as many early European settlers called the Upper Murray area home, and the museum boasts a sizable research room of local records.

The building, which was formerly the Shire Offices, was erected in 1926 and gazetted to the museum in 1971.

The museum houses an interesting collection of local memorabilia, including many nationally significant items.

An authentic bark slab hut as used by the

mountain cattlemen has also been constructed on the site.

An internationally significant item in the museum is Jim Simpson's rug, one of Australia's most precious items of war memorabilia which is housed in the purpose-built cabinet. Mr Simpson knitted the rug, depicting the map of Australia, while he was a prisoner of war during World War II.

The museum is staffed wholly by volunteers and is open on a daily basis. Check the Visitor Information Centre for times.

See the best bush racing

A day at the races is both a sporting and social occasion in the Upper Murray.

The annual race meeting at the Towong Racecourse, near Corryong, attracts thousands of punters.

Some are caught up in the excitement of the horse racing while others are more intent on relaxing in the picturesque setting under shady 100-year-old elm trees.

The racetrack and historic grandstand have undergone major renovations, adding to the amenity.

Over the years, thousands have made the journey to "The Flemington of the Bush", and reportedly among them was legendary Melbourne gangster Squizzy Taylor.

In the late 1920s Squizzy and his gang, who were allegedly hiding out in the area, could not resist the temptation and made

off with the day's gate takings!

A book 'Towong Turf Club Tales, chronicling the history of the club and the people and horses associated with it, was launched prior to the 2025 Cup Meeting.

The Towong Turf Club holds its annual Cup meeting on the Saturday of the March long weekend in Victoria.

It attracts many expatriots and regular visitors who make the trek to catch up with old friends.

Towong features full on course TAB operations, a strong bookmakers ring and Sky Channel.

There is also a variety of entertainment including live music, free kids' activities, bar and food trucks. Marquee packages are also available.

On race day buses run to and from Corryong and the other towns in the area.

For more information phone 0427 220 966.



Campers are spoilt for choices



Recharge your batteries



The township of Cudgewa, just 10 kilometres from Corryong, is perfect for spending a quiet day unwinding.

Cudgewa has the distinction of having been the largest railhead for beef cattle in Australia in its heyday.

It is at the end of the old railway line from Wodonga. A storyboard at the site tells about the part the railway played in the town's history.

The colourful playground at Cudgewa is a lovely venue for a picnic.

Other attractions in the district include the majestic Bluff Falls picnic area and the Cudgewa Creek, which is well known as a hot fishing spot.

Camping enthusiasts are well catered for in the region with more than 60 caravan parks and camping sites located throughout the Tallangatta area, Upper Murray and into New South Wales.

A Camping Guide is available at local information centres.

Visitors are advised

to take the necessary precautions when camping out by checking weather conditions in advance and getting the latest information on road conditions and closures.

It is advisable to carry your own firewood for fires and barbecues at some of the more isolated camp spots.

Our towns are RV friendly

Caravans, motorhomes and campervans can be assured that visiting the Towong Shire will be a friendly experience, following official recognition of Corryong and Tallangatta by the Campervan Motorhome Club of Australia.

Improving facilities to encourage more caravan, motorhome and campervan visitors has been an essential priority of the Towong Shire Council.

The industry is the fastest growing domestic tourism sector in Australia in the past 10 years and the Upper Murray is a great destination for RV tourists.



**plus
LIQUOR**

How the locals like it™

Open 7 Days

- Fresh Local Meat, Deli & Produce
- Large Range of Grocery, Liquor & Hardware Products
- Phone Orders & FREE Home Delivery

See our Facebook Page for Trading Hours, Extra Specials & Promotions

24-30 Hanson St., Corryong

Ph: 6076 1286 / Fax: 02 6076 1723



Where legends are made

The celebration of a culture and history that is uniquely Australian begins when thousands of lovers of all things that celebrate Australia's mountain bush heritage converge on Corryong in April.

The Man From Snowy River Bush Festival is a great weekend of art, music, poetry, horse competition, entertainment, trade stalls, street parades, markets, historical machinery, ute muster, dog competitions... and fun! Lots of fun!

From the dust busting action of the re-enactment of Banjo's famous poem, the rodeo, unique quality horsemanship or the side busting laughter at the bush poets or bending your elbow at the bar and having a dance with your best mate to the country rock bands there really is something for everyone.

The Man From Snowy River Re-enactment kicks off the festival in a cloud of dust and nail biting action, the rough terrain indicative of the imagery represented in Banjo Paterson's famous poem.

An Australian-themed festival isn't complete without good old bush poetry. Throw in a great display with some of the best country artists and photographers depicting the Australian bush culture and stroll the market stalls for those special and unique treasures only found in the country.

We know Jack Riley didn't drive a ute but any Australian stockman worth his salt does and the best will be on display at the Ute Muster.

Visitors also have the

chance to be part of this legendary weekend by entering the Bush Idol competition and win cash and guitars and the opportunity to perform at the Country Rock Concert on the main stage on Saturday night.

Friday night's Man From Snowy River Rodeo is full of bone jarring excitement of the bull and bronc riding invitational spectacular.

Other entertainment includes a working cattle or sheep dog competition, kids party in Attree Park in town and the team muster.

The highlight of the festival is the \$60,000 Man from Snowy River Challenge which culminates in the action packed and breathtaking Brumby Catch and Stocksaddle Buckjump which are events not to be missed.

The prestigious horse riding event draws skilled stockmen and stockwomen from right across Australia who take part in demanding tests of equine skills.

Only the top ten competitors will take part in the daring final events - wild horse catching and stocksaddle buck jumping.

These will determine who will leave Corryong with the prestigious Modern Man from Snowy River title along with a cash prize and awards.

The event has gone from strength to strength over the years.

All Challenge events take place at the Corryong Showgrounds where many of the entrants and their supporters camp throughout the festival.



The Stocksaddle Buckjump is the final event which decides the Challenge winner.

The Challenge begins on the Friday and the preliminary rounds are held over two days - vet and gear check, packhorse, stockhandling, horse-shoeing, whipcracking, cross country and bareback obstacle.

The top ten competitors are announced on the Saturday evening and the finalists are able to celebrate at the Open Air Concert which takes place that night.

The seniors finals take place on Sunday. The daring Wild Horse Catch and Stock Saddle Buckjump are exciting displays of skills - great entertainment for

onlookers.

The prizes are awarded following completion of Buckjump and tallying of the final scores.

Each year the event is hailed as the best ever, as the riders strive to be the best in the land.

A host of local riders also compete, hoping for a home town victory.

Several promising riders have graduated from the junior event to the senior Challenge.

That includes three-time champion John Mitchell from Tooma (2016-2018), surpassing the feat of his brother David who won in 2010 and 2012; however, the

latter drew level with his sibling after winning in 2025.

The 2026 bush festival will be held from April 16th - 19th.

Two-time junior winner, Travis Bandy, won the senior title in 2023, following in the footsteps of his father Scott who won the event five times.

Previous winners of the Challenge have been:-

Seniors

1995 - Bill Willoughby
1996 - Scott Bandy
1998 - Ron Connley
1999 - Ron Connley, and Barry Paton
2000 - Scott Bandy
2001 - Ben Hall
2002 - Geoff Willis
2003 - Jason Leitch
2004 - Jason Leitch
2005 - Geoff Willis
2007 - Sam Baylis
2007 - Ryan Pendergast
2008 - Not held (equine influenza)
2009 - Morgan Webb
2010 - David Mitchell
2011 - Scott Bandy
2012 - David Mitchell
2013 - Scott Bandy
2014 - Scott Bandy
2015 - Bronson Macklinshaw
2016 - John Mitchell

2017 - John Mitchell
2018 - John Mitchell
2019 - Kieran Davidson
2020 - Not held
2021 - Morgan Webb
2022 - Morgan Webb
2023 - Travis Bandy
2024 - Morgan Webb
2025 - David Mitchell

Women

1995 - Tarina Connley
1996 - Jocelyn Paton
1998 - Jocelyn Paton
1999 - Jocelyn Paton
2000 - Linda Adams
2001 - Jocelyn Paton
2002 - Linda Adams
2003 - Julie Willoughby
2004 - Jess Newton
2005 - Megan Nankervis & Sarah Connley
2006 - Sarah Connley
2007 - Christie O'Connor
2008 - Not held
2009 - Christie O'Connor
2010 - Christie O'Connor
2011 - Malory Nankervis
2012 - Kirby Nankervis
2013 - Christie O'Connor
2014 - Emma O'Shea
2015 - Emma O'Shea
2016 - Emma O'Shea
2017 - Emma O'Shea
2018 - Emma O'Shea
2019 - Emma O'Shea
2020 - Not held (pandemic)
2021 - Emma O'Shea
2022 - Emma O'Shea
2023 - Larissa Guaran

2024 - Christy Davidson
2025 - Emma Webb

Juniors

1998 - Jim Laverty
1999 - Mark Patterson
2000 - Jim Laverty
2001 - Ryan Pendergast
2002 - David Mitchell
2003 - David Mitchell
2004 - Tyler Pendergast
2005 - Rhys Angland
2006 - Morgan Webb
2007 - John Mitchell
2008 - Not held
2009 - Daryl Baines
2010 - Ben Donahue
2011 - Dean Pendergast & William Harrison
2012 - William Harrison
2013 - William Harrison
2014 - Nick Roe
2015 - Johnny Ward
2016 - Kelsie Lupson
2017 - Johnny Ward
2018 - Travis Bandy
2019 - Travis Bandy
2020 - Not held
2021 - Jessie Fox
2022 - Bill Phegan
2023 - Scarlett Chaston
2024 - Mackenzie Dunn
2025 - Luke Turnbull

Striplings

2021 - Zoe Willis
2022 - Zoe Willis
2023 - Jack Lindley
2024 - Jorgie Sturt
2025 - Luca Chaplin

UPPER MURRAY FARMERS MARKET

Monthly Markets Oct-May

From 9am - 12 noon

Attree Centre, Corryong

Fresh produce from local farms and backyards & hand made craft from local artisans

All your favourite stallholders will be there so come along and enjoy everything the market has to offer!

CORRYONG NEWSAGENCY

- Phone accessories
- Toys and games
- Books and magazines
- Batteries
- Gifts for all occasions
- Drinks & icecreams

the Lott

43 - 45 HANSON STREET, CORRYONG

P: 02 6076 1381/ E: info@corryongnews.net.au